

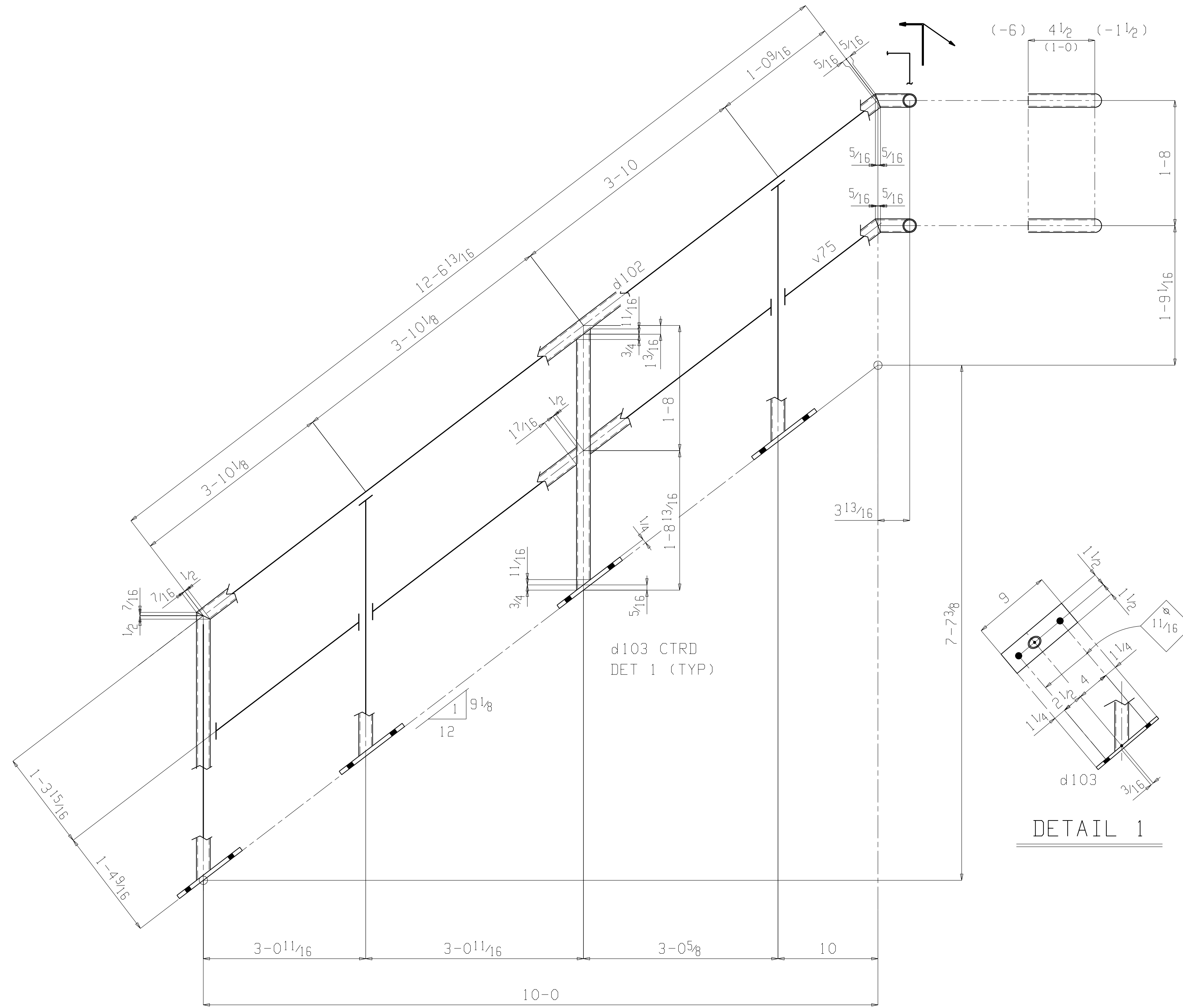
**ONE STAIR K134S**

- GENERAL NOTES:**
1. ALL STRUCTURAL W & WT SHAPES SHALL CONFORM TO A992 GRADE ALL OTHER MATERIAL SHALL CONFORM TO A36 GRADE.
  2. BOLTS TO BE 3/4" Dia. A325N/W HARDENED WASHERS (U.N.O.)
  3. SHOP CONNECTIONS SHALL BE WELDED WITH E 70 XX ELECTRODES OR HIGH STRENGTH BOLTS.
  4. ALL COLUMN BEARING AREAS SHALL BE MILLED.
  5. COATING SHALL BE AS FOLLOWS:
    - A. ALL STEEL TO BE SHOP PAINTED PER SPEC 29271-300-2(WHITE)

BILL OF MATERIAL									
Quantity	Quantity	Shipping	Minor	Description	Length	Remarks	Weight		Steel
Total	Unit	Mark	Mark				Total		Grade
ONE		K134S		STAIR			322		
1	1		K134S	C10x15.3	12	11 3/8	198		A36
1	1		d91L	C10x15.3	5	8 3/8	87		A36
1	1		d92	L3x3x3/8	0	3	2		A36
12	12		d93R	L2x2x1/4	0	10	32		A36
1	1		d94	L3x3x3/8	0	5 1/2	3		A36

BILL OF MATERIAL										Total weight : 322	
Quantity	Quantity	Shipping	Minor	Description	Length	Remarks	Weight		Steel		
Total	Unit	Mark	Mark				Total		Grade		
2	2			FIELD BOLTS							
				3/4 Dia A325N	0	1 3/4					
				IHD WASH							

XYZ FABRICATION	CUSTOMER: AXON CHEMICALS		OPEN HOLES: 1/16" Dia (U.N.O.)		DRAWN BY	CHECKED BY	SEQUENCE NO:	REFERENCE DRAWING	DATE	JOB NO.	DWG. NO.
	PROJECT: SLUDGE REFINERY UNIT		WELDS: 1/4" FILLET SEAL (U.N.O.) BEAM TAILS ARE FROM LEFT END OF MEMBER COLUMN TAILS ARE FROM TOP OF BASE PLATE		C. D. I.	C. D. I.	1	E001	1-04	03001	134



ONE STAIRRAIL K142SR

GENERAL NOTES:

1. ALL STRUCTURAL W & WT SHAPES SHALL CONFORM TO A992 GRADE ALL OTHER MATERIAL SHALL CONFORM TO A36 GRADE.
2. BOLTS TO BE 3/4" Dia. A325N/W HARDENED WASHERS (U.N.O.)
3. SHOP CONNECTIONS SHALL BE WELDED WITH E 70 XX ELECTRODES OR HIGH STRENGTH BOLTS.
4. ALL COLUMN BEARING AREAS SHALL BE MILLED.
5. COATING SHALL BE AS FOLLOWS:
  - A. ALL STEEL TO BE SHOP PAINTED PER SPEC 29271-300-2(WHITE)

BILL OF MATERIAL

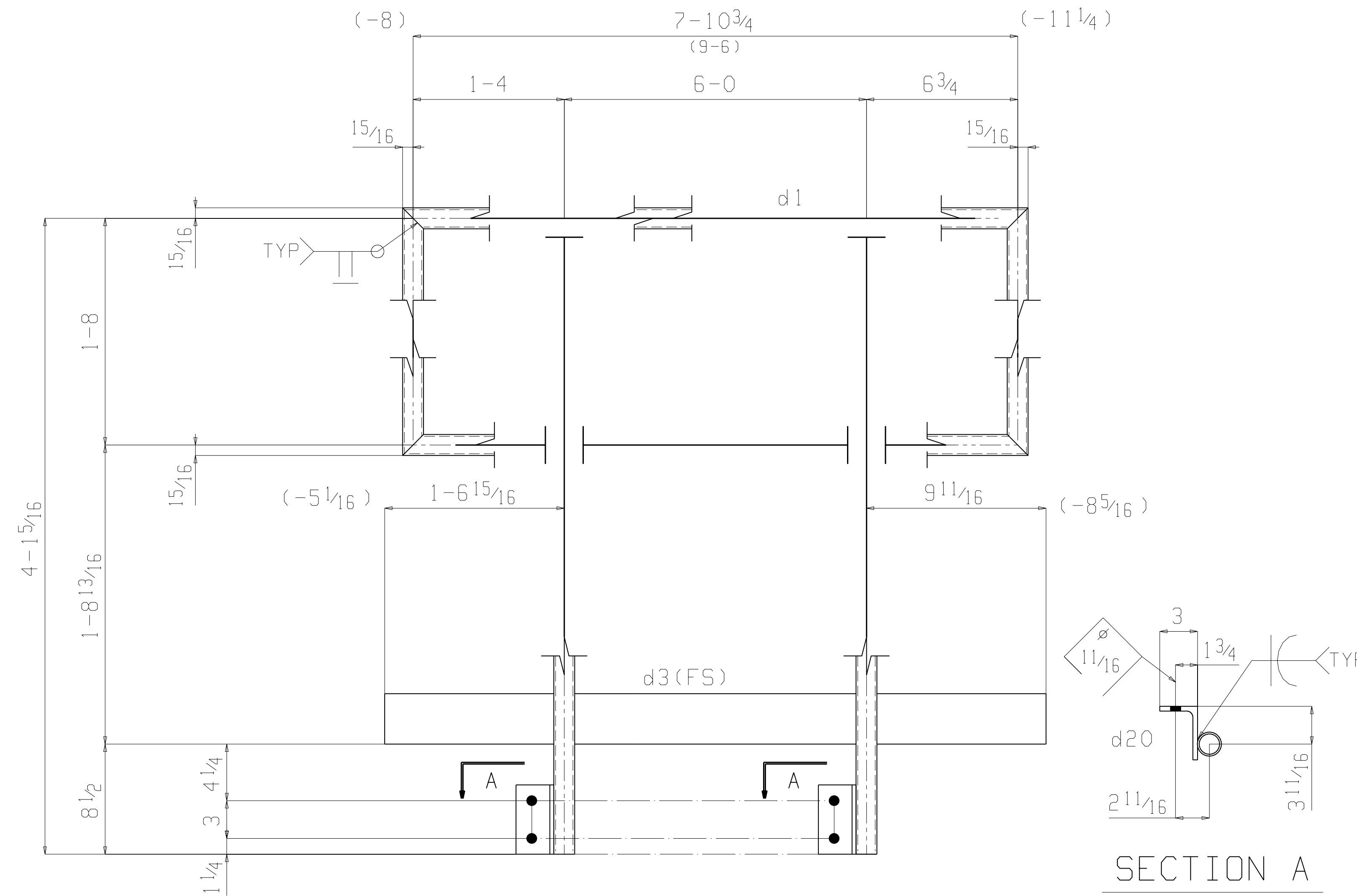
Quantity	Quantity	Shipping	Minor	Description	Length	Remarks	Weight	Steel
Total	Unit	Mark	Mark				Total	Grade
ONE		K142SR		STAIRRAIL			120	
1	1		d102	PIPE 1 1/2 STD	41 0	LINEAR FOOT	112	A53B
4	4		d103	FL 1/4x3	0 9		8	A36
8	8			FIELD BOLTS				
				5/8 Dia A307	0 1 3/4	1BEV WASH		

BILL OF MATERIAL

Total weight : 120

Quantity	Quantity	Shipping	Minor	Description	Length	Remarks	Weight	Steel
Total	Unit	Mark	Mark				Total	Grade

XYZ FABRICATION	CUSTOMER: AXXON CHEMICALS	OPEN HOLES: 1 3/16" Dia (U.N.O.)	DRAWN BY	CHECKED BY	SEQUENCE NO:	REFERENCE DRAWING	DATE	JOB NO.	DWG. NO.
	PROJECT: SLUDGE REFINERY UNIT	WELDS: 1/4" FILLET SEAL (U.N.O.) BEAM TAILS ARE FROM LEFT END OF MEMBER COLUMN TAILS ARE FROM TOP OF BASE PLATE	C.D.I.	C.D.I.	1	E001	1-04	03001	142



ONE HANDRAIL K149HR

GENERAL NOTES:

1. ALL STRUCTURAL W & WT SHAPES SHALL CONFORM TO A992 GRADE  
ALL OTHER MATERIAL SHALL CONFORM TO A36 GRADE.
2. BOLTS TO BE 3/4" Dia. A325N/W HARDENED WASHERS (U.N.O.)
3. SHOP CONNECTIONS SHALL BE WELDED WITH E 70 XX ELECTRODES  
OR HIGH STRENGTH BOLTS.
4. ALL COLUMN BEARING AREAS SHALL BE MILLED.
5. COATING SHALL BE AS FOLLOWS:  
A. ALL STEEL TO BE SHOP PAINTED PER SPEC 29271-300-2(WHITE)

BILL OF MATERIAL

Quantity	Quantity	Shipping	Minor	Description	Length	Remarks	Weight	Steel
Total	Unit	Mark	Mark				Total	Grade
ONE		K149HR		HANDRAIL			111	
1	1		d1	PIPE 1 1/2 STD	28 0	LINEAR FOOT	76	A53B
2	2		d20	L4x3x1/4	0 5 1/2		6	A36
1	1		d3	FL 1/4x4	8 4 5/8		29	A36
				FIELD BOLTS				
4	4		5/8 Dia	A307	0 1 3/4	1HD WASH		

BILL OF MATERIAL

Total weight : 111

Quantity	Quantity	Shipping	Minor	Description	Length	Remarks	Weight	Steel
Total	Unit	Mark	Mark				Total	Grade

XYZ FABRICATION

CUSTOMER: AXXON CHEMICALS

PROJECT: SLUDGE REFINERY UNIT

OPEN HOLES: 1/16" Dia (U.N.O.)  
WELDS: 1/4" FILLET SEAL (U.N.O.)  
BEAM TAILS ARE FROM LEFT END OF MEMBER  
COLUMN TAILS ARE FROM TOP OF BASE PLATE

DRAWN BY

C.D.I.

CHECKED BY

C.D.I.

SEQUENCE NO:

1

REFERENCE DRAWING

E001

DATE

1-04

JOB NO.

03001

DWG. NO.

149



